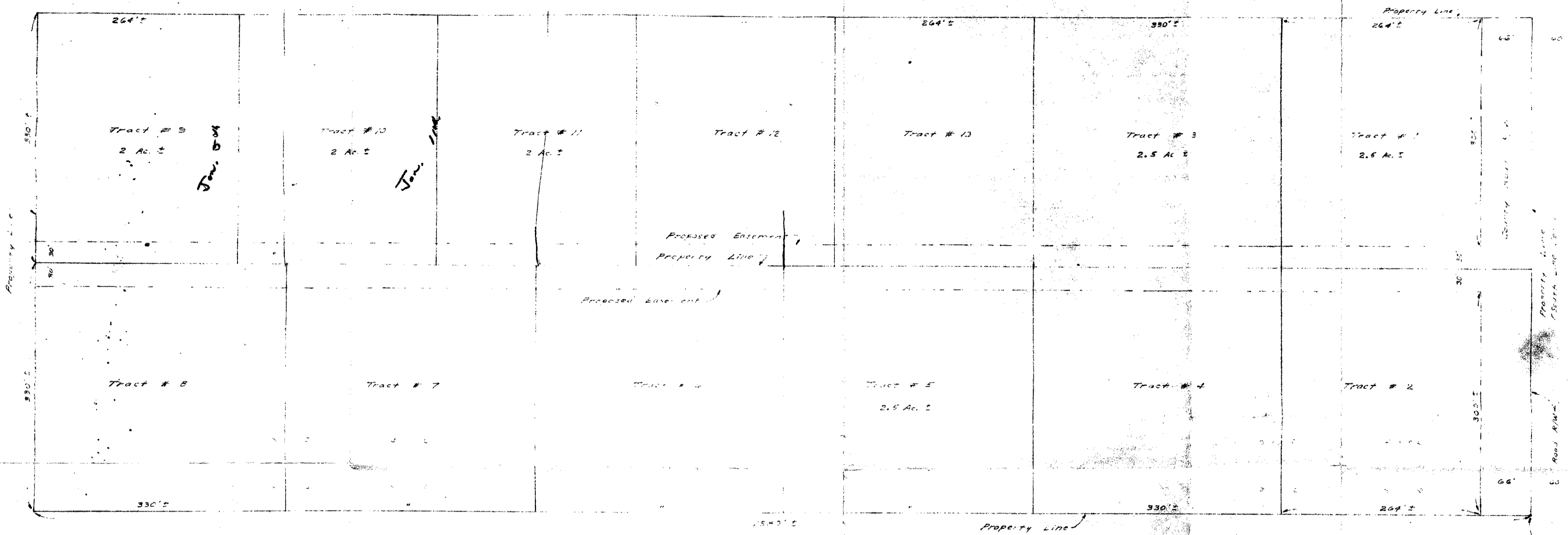


Scale 1" = 60'



- | Tract No. | Description |
|-----------|---|
| 1 | The S.E. 1/4 of the S.W. 1/4 of the S.W. 1/4 of the S.E. 1/4 of Sec. 1, T. 41 S., R. 41 E. |
| 2 | The S.W. 1/4 of the S.W. 1/4 of the S.W. 1/4 of the S.E. 1/4 of Sec. 1, T. 41 S., R. 41 E. |
| 3 | The N.E. 1/4 of the S.W. 1/4 of the S.W. 1/4 of the S.E. 1/4 of Sec. 1, T. 41 S., R. 41 E. |
| 4 | The N.W. 1/4 & the S.W. 1/4 of the S.W. 1/4 of the S.E. 1/4 of Sec. 1, T. 41 S., R. 41 E. |
| 5 | The S.W. 1/4 of the N.W. 1/4 of the S.W. 1/4 of the S.E. 1/4 of Sec. 1, T. 41 S., R. 41 E. |
| 6 | The N.W. 1/4 of the N.W. 1/4 of the S.W. 1/4 of the S.E. 1/4 of Sec. 1, T. 41 S., R. 41 E. |
| 7 | The S.W. 1/4 of the S.W. 1/4 of the N.W. 1/4 of the S.E. 1/4 of Sec. 1, T. 41 S., R. 41 E. |
| 8 | The N.W. 1/4 of the S.W. 1/4 of the N.W. 1/4 of the S.E. 1/4 of Sec. 1, T. 41 S., R. 41 E. |
| 9 | The North 1/2 of the N.E. 1/4 of the S.W. 1/4 of the N.W. 1/4 of the S.E. 1/4 of Sec. 1, T. 41 S., R. 41 E. |
| 10 | The South 1/2 of the N.E. 1/4 of the S.W. 1/4 of the N.W. 1/4 of the S.E. 1/4 of the S.W. 1/4 of the S.E. 1/4 of the S.W. 1/4 of the S.E. 1/4 of the S.W. 1/4 of the S.E. 1/4 of Sec. 1, T. 41 S., R. 41 E. |

- | Tract No. | Description |
|-----------|---|
| 11 | The South 1/2 of the S.E. 1/4 of the S.W. 1/4 of the N.W. 1/4 of the S.E. 1/4 of the S.W. 1/4 of the N.E. 1/4 of the N.W. 1/4 of the S.W. 1/4 of the S.E. 1/4 of Sec. 1, T. 41 S., R. 41 E. |
| 12 | The South 1/2 of the N.E. 1/4 of the N.W. 1/4 of the S.W. 1/4 of the S.E. 1/4 of the N.W. 1/4 of the S.W. 1/4 of the S.E. 1/4 of the S.W. 1/4 of the S.E. 1/4 of Sec. 1, T. 41 S., R. 41 E. |
| 13 | The South 1/2 of the S.E. 1/4 of the N.W. 1/4 of the S.W. 1/4 of the S.E. 1/4 of Sec. 1, T. 41 S., R. 41 E. |

The above described tracts are in Section 1, Township 41 South, Range 41 East, Palm Beach County, Florida.

S.W. corner of S.E. 1/4 of Sec. 1, T. 41 S., R. 41 E.

NOTE: This plat does NOT represent a land survey.

THE UNRECORDED PLAT OF
LIBERTY RANCH ESTATES
PALM BEACH COUNTY, FLORIDA
LARSON, OVEIL & BARGETT, INC.
ENGINEERS

STUART, FLORIDA	SCALE 1" = 60'	DATE 1/13-72	APPROVED BY [Signature]
		DATE 1/13-72	APPROVED BY [Signature]

ur0199.igr
LIBERTY RANCH ESTATES WIRKKALA

3000-008